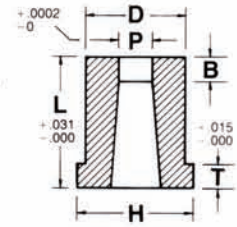


GROUND TAPER RELIEF
1/4" PER SIDE
STANDARD
TAPERED TO TOP
(NO LAND)
ALSO AVAILABLE



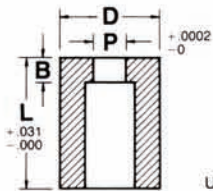
GROUND TAPER RELIEF
1/4" PER SIDE
STANDARD
TAPERED TO TOP
(NO LAND)
ALSO AVAILABLE



Taper Relief Carbide Round Die Bushings

TYPE HEADLESS DD () HEADED DHD ()	BODY DIAMETER D	HEAD DIAMETER H	HEAD THICKNESS T	MINIMUM LAND B	HEADLESS OR HEADED P		OVERALL LENGTH L	
					MIN	MAX	1	1 1/4
() 12	1/8	3/16	1/16	1/16	.031	.062	■	■
() 18	3/16	5/16	1/8	1/8	.062	.128	■	■
() 25	1/4	3/8	3/16	5/32	.062	.150	■	■
() 31	5/16	7/16	3/16	5/32	.062	.170	■	■
() 37	3/8	1/2	3/16	3/16	.062	.190	■	■
() 43	7/16	9/16	3/16	3/16	.156	.300	■	■
() 50	1/2	5/8	3/16	3/16	.156	.305	■	■
() 62	5/8	3/4	3/16	3/16	.250	.425	■	■
() 75	3/4	7/8	3/16	1/4	.312	.531	■	■
() 87	7/8	1	3/16	1/4	.375	.656	■	■
() 100	1	1 1/8	3/16	1/4	.437	.781	■	■

OTHER LENGTHS AVAILABLE

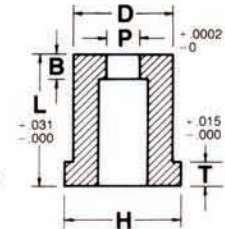


UNGROUND RELIEF

Wire and conventional EDM
die button blanks available

"D" PRESS FIT TOLERANCES	
Type 1 +.00015 +.00020	Type 2 +.0002 +.0004
TIR = .0002	

If unspecified, Type 2 will be given

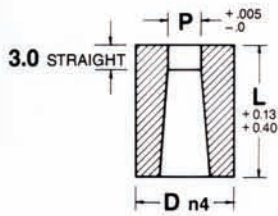


UNGROUND RELIEF

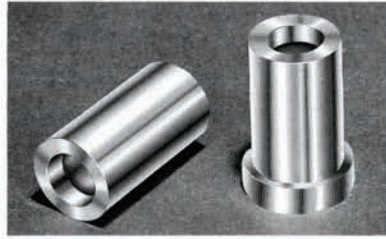
Counterbored Carbide Round Die Bushings

TYPE HEADLESS DU () HEADED DHU ()	BODY DIAMETER D	HEAD DIAMETER H	HEAD THICKNESS T	MINIMUM LAND B	HEADLESS OR HEADED P		OVERALL LENGTH L	
					MIN	MAX	1	1 1/4
() 12	1/8	3/16	1/16	1/16	.031	.062	■	■
() 18	3/16	5/16	1/8	1/8	.062	.128	■	■
() 25	1/4	3/8	3/16	5/32	.062	.150	■	■
() 31	5/16	7/16	3/16	5/32	.062	.170	■	■
() 37	3/8	1/2	3/16	3/16	.062	.190	■	■
() 43	7/16	9/16	3/16	3/16	.156	.300	■	■
() 50	1/2	5/8	3/16	3/16	.156	.305	■	■
() 62	5/8	3/4	3/16	3/16	.250	.425	■	■
() 75	3/4	7/8	3/16	1/4	.312	.531	■	■
() 87	7/8	1	3/16	1/4	.375	.656	■	■
() 100	1	1 1/8	3/16	1/4	.437	.781	■	■

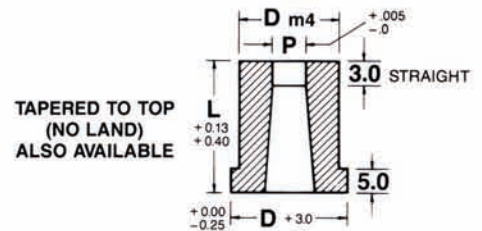
OTHER LENGTHS AVAILABLE



TAPERED TO TOP
(NO LAND)
ALSO AVAILABLE



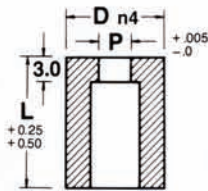
P to D 0.008



TAPERED TO TOP
(NO LAND)
ALSO AVAILABLE

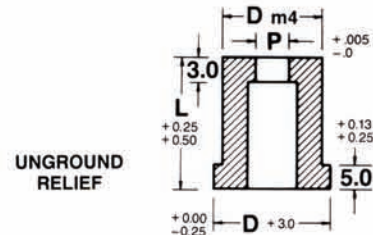
Metric Taper Relief Carbide Round Die Bushings

D	TYPE HEADLESS MD () HEADED MHD ()	HEADLESS OR HEADED P		OVERALL LENGTH L							
		MIN.	MAX.	13	16	19	22	25	28	32	35
5.0	() 05	1.600	3.200	■	■	■	■	■	■		
6.0	() 06	1.600	3.900	■	■	■	■	■	■		
8.0	() 08	2.400	5.400	■	■	■	■	■	■		
10.0	() 10	3.200	6.800	■	■	■	■	■	■	■	■
13.0	() 13	5.400	8.800	■	■	■	■	■	■	■	■
16.0	() 16	7.400	10.800			■	■	■	■	■	■
20.0	() 20	9.500	13.600			■	■	■	■	■	■
25.0	() 25	12.000	17.000			■	■	■	■	■	■



UNGROUND
RELIEF

P to D 0.008



UNGROUND
RELIEF

Metric Counterbored Carbide Round Die Bushings

D	TYPE HEADLESS MU () HEADED MHU ()	HEADLESS OR HEADED P		OVERALL LENGTH L							
		MIN.	MAX.	13	16	19	22	25	28	32	35
5.0	() 05	1.600	3.200	■	■	■	■	■	■		
6.0	() 06	1.600	3.900	■	■	■	■	■	■		
8.0	() 08	2.400	5.400	■	■	■	■	■	■		
10.0	() 10	3.200	6.800	■	■	■	■	■	■	■	■
13.0	() 13	5.400	8.800	■	■	■	■	■	■	■	■
16.0	() 16	7.400	10.800			■	■	■	■	■	■
20.0	() 20	9.500	13.600			■	■	■	■	■	■
25.0	() 25	12.000	17.000			■	■	■	■	■	■